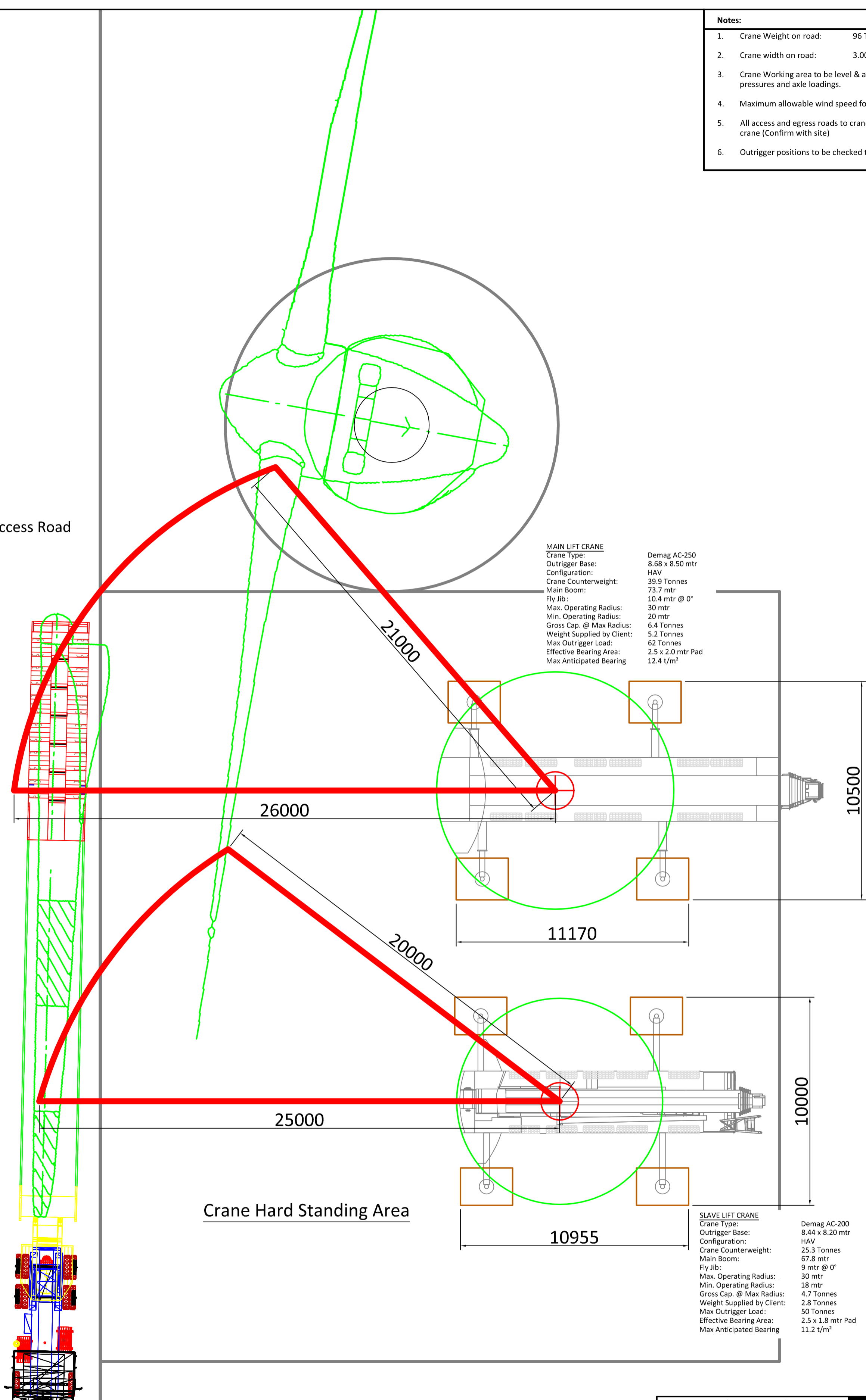


- Notes:**
1. Crane Weight on road: 96 Tonnes
  2. Crane width on road: 3.00 mtr
  3. Crane Working area to be level & able to withstand ground bearing pressures and axle loadings.
  4. Maximum allowable wind speed for mobile crane operation 9.8m/s
  5. All access and egress roads to crane location must be suitable for crane (Confirm with site)
  6. Outrigger positions to be checked to confirm loadings are suitable

Access Road



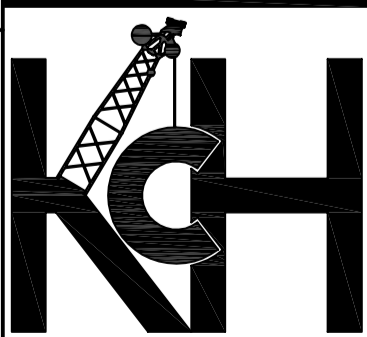
**MAIN LIFT CRANE**  
 Crane Type: Demag AC-250  
 Outrigger Base: 8.68 x 8.50 mtr  
 Configuration: HAV  
 Crane Counterweight: 39.9 Tonnes  
 Main Boom: 73.7 mtr  
 Fly Jib: 10.4 mtr @ 0°  
 Max. Operating Radius: 30 mtr  
 Min. Operating Radius: 20 mtr  
 Gross Cap. @ Max Radius: 6.4 Tonnes  
 Weight Supplied by Client: 5.2 Tonnes  
 Max Outrigger Load: 62 Tonnes  
 Effective Bearing Area: 2.5 x 2.0 mtr Pad  
 Max Anticipated Bearing: 12.4 t/m<sup>2</sup>

**SLAVE LIFT CRANE**  
 Crane Type: Demag AC-200  
 Outrigger Base: 8.44 x 8.20 mtr  
 Configuration: HAV  
 Crane Counterweight: 25.3 Tonnes  
 Main Boom: 67.8 mtr  
 Fly Jib: 9 mtr @ 0°  
 Max. Operating Radius: 30 mtr  
 Min. Operating Radius: 18 mtr  
 Gross Cap. @ Max Radius: 4.7 Tonnes  
 Weight Supplied by Client: 2.8 Tonnes  
 Max Outrigger Load: 50 Tonnes  
 Effective Bearing Area: 2.5 x 1.8 mtr Pad  
 Max Anticipated Bearing: 11.2 t/m<sup>2</sup>

Crane Hard Standing Area

CRANE DATA (DIN ISO 75%)  
 AS SHOWN

Scale	Drawn By: R. Ryan
N/S	Date: N/A
Client:	N/A
Site:	N/A
Project:	Wind Turbine Blade Replacement Plan



**KAVANAGH CRANE HIRE LTD**  
 TEL: (+353) (0)5394-28128  
 FAX: (+353) (0)5394-28302  
 E-MAIL: info@irishcranehire.com